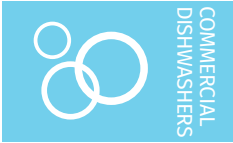




Project \_\_\_\_\_  
 AIA # \_\_\_\_\_ SIS # \_\_\_\_\_  
 Item # \_\_\_\_\_ Quantity \_\_\_\_\_ C.S.I. Section 114000



## PW20 Pot, Pan & Utensil Washer



### STANDARD FEATURES

- + Timed wash cycles; racks per hour: 20 (2 minute wash), 12 (4 minute wash), 8 (6 minute wash)
- + 2.35 US gallons (8.9 L) of water per cycle
- + Hot water sanitation machine
- + Sense-A-Temp™ booster heater capable of 70°F (39°C) rise
- + Front loading, split-door configuration
- + Chamber accepts 20 full-sized sheet pans, or 140 US quart (132 L) mixing bowl
- + Advanced service diagnostics
- + 16 gauge (1.6 mm) stainless steel deep drawn tank
- + Microcomputer controls with advanced digital cycle/temperature display
- + Two revolving upper and lower interchangeable anti-clogging wash arms and rinse arms
- + Removable stainless steel scrap screens and scrap basket
- + Corrosion resistant pump
- + Automatic pumped drain
- + Pumped rinse
- + 33.79"h x 49.61"w (858 x 1260 mm) door opening
- + Automatic fill
- + Delime pump standard (Advansys)
- + Electric tank heat
- + 12' Spray hose (305 mm)
- + Rack size: 48.8"w x 27.615"d x 4.813"h (1240 x 701 x 122 mm)

**PW SERIES – PW20**

### SPECIFIER STATEMENT

Specified dishwasher will be Hobart PW20 Pot/Pan/Utensil Washer, front loading with split door design, (20) pan capacity, over/under rotating arms, 2/4/6 minute adjustable cycles, up to (20) racks/hour, includes: (2) flat grids, (2) tray racks & (1) flat bottom rack, prerinse spray hose, sanitizing with Sense-A-Temp™ 70°F (39°C) rise booster, vent fan control, pumped drain, stainless steel construction, 208-240/60/3 & 480/60/3, NSF, BISSC, ENERGY STAR®.

**1 year parts and labor warranty.**

### OPTIONS & ACCESSORIES (Available at extra cost)

- Pressure regulator valve ¾" (19 mm)
- DWT-PW drain water tempering kit
- Steam pan rack (capacity for two racks)
- Flanged feet
- Water hammer arrestor kit
- Door height lowering kit
- 12 pan rack
- Combination rack

Approved by \_\_\_\_\_ Date \_\_\_\_\_ Approved by \_\_\_\_\_ Date \_\_\_\_\_

### LEGEND

Electrical Connections	
<b>E1</b>	Electrical connection (including electric heat) 1-1/4" (32 mm) conduit hole, 7-1/16" (179 mm) AFF.
Plumbing Connections	
<b>P1</b>	Hot water connection incoming: 110°F (43°C) water minimum. 3/4" (19 mm) female garden hose fitting on 6' (1.83 M) long hose supplied with machine. 7-3/4" (197 mm) AFF.
<b>P2</b>	Drain connection: 7/8" (22 mm) barb fitting, 27-3/8" (695 mm) AFF. 6' (1.83 M) long 7/8" (22 mm) hose supplied with machine.
<b>NOTE:</b> Cold water connection at P2 (as needed when optional drain water tempering kit is included: 55-80°F (13-27°C) recommended water, 1/2" (13 mm) MPT, 26-15/16" (684 mm) AFF.	

**WARNING: Plumbing and electrical connections should be made by qualified personnel who will observe all the applicable plumbing, sanitary, safety codes and National Electrical Code.**

**Plumbing Notes:** Required flowing water pressure to the dishwashing machine is 15-65 PSIG (103-448 kPa). If pressures higher than 65 PSIG (448 kPa) are present, a pressure regulating valve must be installed in the water line to the dishwashing machine (by others).

Recommended water hardness to be 3 grains (51 ppm) or less for best results.

Pressure gauge not required on pumped rinse machines.

**Miscellaneous Notes:** Backflow prevention provided by NSF-approved air gap device. Single point electrical connection machines.

Electrical Specifications			
Voltage	Rated Amps	Minimum Supply Circuit Ampacity	Maximum Protective Device
208/240/60/3	58.6/64.0	70/80	80
480/60/3	35	45	45

Dish machine not provided with internal GFCI protection.

All dimensions taken from floor line may increase 1-1/2" (38 mm) depending on leg adjustment.

### SPECIFICATIONS

#### Capacities

Wash Time Settings (minutes) ..... 2, 4, 6  
 Racks per Hour ..... 20 (2 min. wash), 12 (4 min. wash), 8 (6 min. wash)  
 Tank Capacity – US Gallons (L) ..... 34 (129)

#### Motor Horsepower (kilowatts)

Wash ..... 4.0 (3.0)  
 Rinse ..... 0.33 (0.25)

#### Water Consumption

U.S. Gallons per Cycle (L) ..... 2.35 (8.9)  
 U.S. Gallons (L) per Hour (maximum use) ..... 47.0 (178)  
 Peak Drain Flow – U.S. Gallons (L) ..... 26.0 (98)

#### Temperatures °F (°C)

Wash ..... 150 (66)  
 Rinse ..... 180 (82)  
 Incoming Water Temperature (minimum recommended) ..... 110 (43)

#### Heating

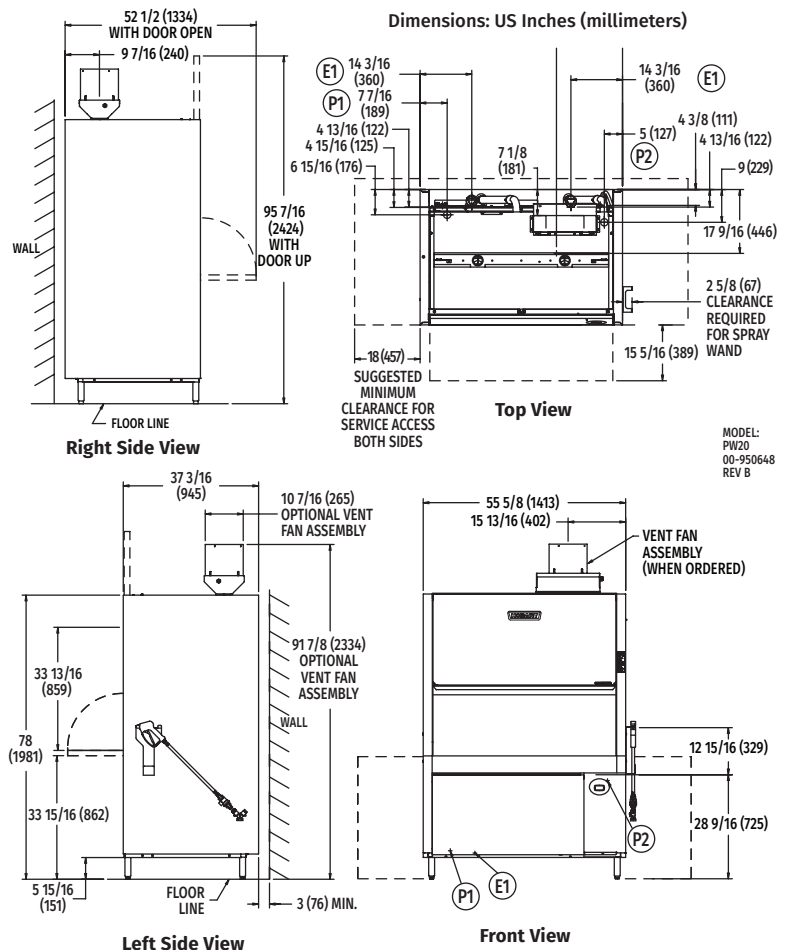
Tank Heat, electric (kW) ..... 16.4  
 Electric Booster (kW) ..... 16.4

#### Standard 20" x 20" (508 x 508) Rack Complement

Tray Rack (10 pan each) ..... 2  
 Flat Grid ..... 2  
 Flat Bottom ..... 1

Shipping Weight (approximate) ..... 705 lbs. (320 kg)

Crated Dimensions. .... 80"H x 64"W x 40"D (2032 x 1626 x 1016 mm)



MODEL:  
PW20  
00-950648  
REV B