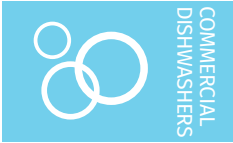




Project _____
 AIA # _____ SIS # _____
 Item # _____ Quantity _____ C.S.I. Section 114000



PW10eR advansys Pot, Pan & Utensil Washer



SPECIFIER STATEMENT

Specified dishwasher will be Hobart PW10eR Advansys™ ventless Pot/Pan/Utensil Washer, front loading with split door design, (10) pan capacity, over/under rotating arms, 2/4/6 minute adjustable cycles, up to (13) racks/hour, includes: (1) flat grid, (1) tray rack & (1) flat bottom rack, prerinse spray hose, sanitizing with Sense-A-Temp™ 70° (39° C) rise booster, pumped drain, stainless steel construction, 208-240/60/3 & 480/60/3, NSF, BISSC, ENERGY STAR®.

1 year parts and labor warranty.

STANDARD FEATURES

- + Timed wash cycles; racks per hour: 13 (2 minute wash), 9 (4 minute wash), 7 (6 minute wash)
- + 1.2 gallons (4.5 L) of water per cycle
- + NSF rated timed wash cycles for 2-4-6 minutes
- + Hot water sanitation machine
- + Steam elimination and energy recovery
- + Sense-A-Temp™ booster heater capable of 70° (39° C) rise
- + Front loading, split-door configuration
- + Chamber accepts 10 full-sized sheet pans, or 140 US quart (132 L) mixing bowl
- + Advanced service diagnostics
- + Advanced delime notification and cycle (includes booster)
- + 16 gauge (1.6 mm) stainless steel deep drawn tank
- + Microcomputer controls with advanced digital cycle/temperature display
- + Two revolving upper and lower anti-clogging wash arms and rinse arms
- + Removable stainless steel scrap screens and scrap basket
- + Corrosion resistant pump
- + Automatic pumped drain
- + Pumped rinse
- + 33.79"h x 26.19" w (858 x 665 mm) door opening
- + Automatic fill
- + Delime pump standard
- + Electric tank heat
- + 12' Spray hose (3.66 M)
- + Rack size: 23.717"w x 26.85"d x 2.268"h (602 x 682 x 58 mm)

OPTIONS & ACCESSORIES (Available at extra cost)

- Pressure regulator valve
- DWT-PW drain water tempering kit
- Steam pan rack
- Door lowering kit
- Heavy duty roll-in rack
- 12 pan rack (must be equipped with heavy duty roll-in rack)
- Water hammer arrestor kit

PW SERIES – PW10eR advansys

Approved by _____ Date _____ Approved by _____ Date _____



LEGEND

Electrical Connections	
E1	Electrical connection (including electric heat) 1-1/4" (32 mm) conduit hole, 7-1/16" (179 mm) AFF.
Plumbing Connections	
P1	Hot water connection incoming: 110°F (43°C) water minimum. 3/4" (19 mm) female garden hose fitting on 6' (1.83 M) long hose supplied with machine. 7-3/4" (197 mm) AFF.
P2	Drain connection: 7/8" (22 mm) barb fitting, 27-1/2" (699 mm) AFF. 6' long (1.83 M) 7/8" (22 mm) hose supplied with machine.
P3	Cold water connection incoming: 90°F (32°C) water maximum (65°F/19°C optimal), 3/4" (19 mm) female garden hose fitting on 6' (1.83 M) long hose supplied with machine. 76-7/16" (1.95 M) AFF.

WARNING: Plumbing and electrical connections should be made by qualified personnel who will observe all the applicable plumbing, sanitary, safety codes and National Electrical Code.

Plumbing Notes: Required flowing water pressure to the dish machine is 15-65 PSIG (103-448 kPa). If pressures higher than 65 PSIG (448 kPa) are present, a pressure regulating valve must be installed in the water line to the dish machine (by others). Recommended water hardness to be 3 grains (51 ppm) or less for best results. Pressure gauge not required on pumped rinse machines.

Miscellaneous Notes: Backflow prevention provided by NSF-approved air gap device. Single point electrical connection machines.

Electrical Specifications			
Voltage	Rated Amps	Minimum Supply Circuit Ampacity	Maximum Protective Device
208/240/60/3	47.6/53.0	60/70	60/70
480/60/3	28.6	35	35

Dish machine not provided with internal GFCI protection.

Approximate Heat Gain to Space without Vent Hood		
Voltage	Type	BTU/Hr.
208	Latent	20,400
	Sensible	12,500
240/280	Latent	24,300
	Sensible	14,800

Vent hood is not required due to internal condensing system.

All dimensions taken from floor line may increase 1-1/2" (38 mm) depending on leg adjustment.

SPECIFICATIONS

Capacities

Wash Time Settings (minutes) 2, 4, 6
Racks per Hour 13 (2 min. wash), 9 (4 min. wash), 7 (6 min. wash)
Tank Capacity – US Gallons (L) 21 (80)

Motor Horsepower (kilowatts)

Wash 4.0 (3.0)
Rinse 0.33 (0.25)

Water Consumption

U.S. Gallons (L) per Cycle 1.2 (4.5)
U.S. Gallons (L) per Hour (maximum use) 15.6 (59)
Peak Drain Flow – U.S. Gallons (gallons/Liters per minute) 18.0 (68)

Temperatures °F (°C)

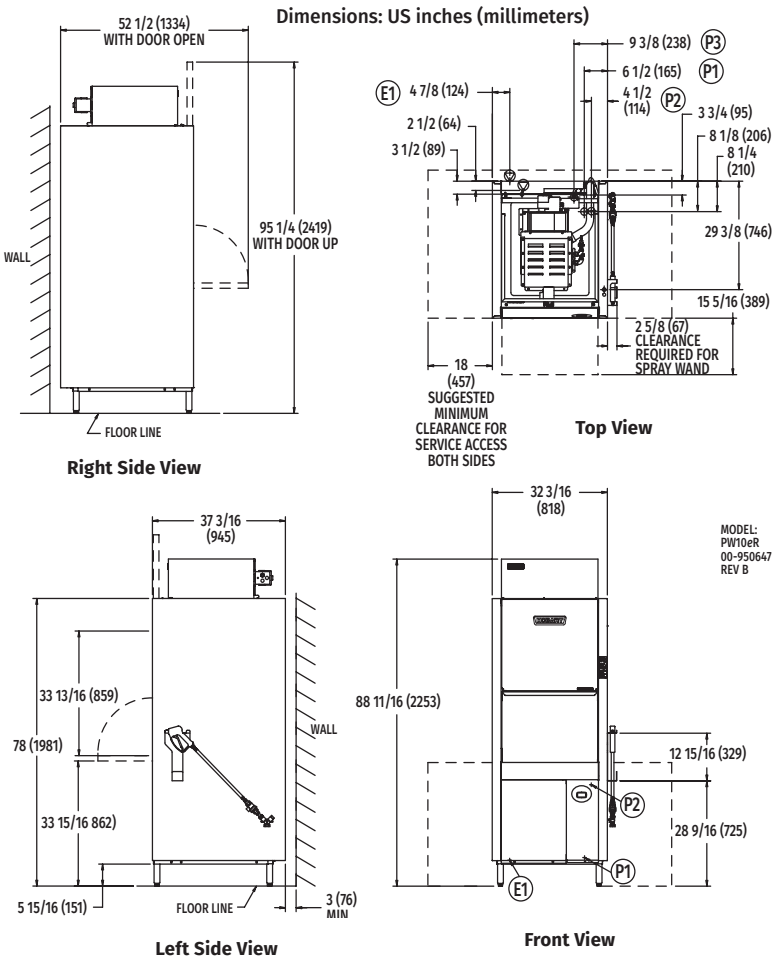
Wash 150 (66)
Rinse 180 (82)
Incoming Water Temperature (minimum recommended) 55 (12.8)

Heating

Tank Heat, electric (kW) 16.4
Electric Booster (kW) 16.4

Shipping Weight (approximate) 575 lbs. (261 kg)

Crated Dimensions. 89 3/4" H x 40 3/4" W x 40" D (2280 x 1022 x 1016 mm)



CAD and/or Revit Files Available