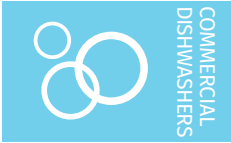
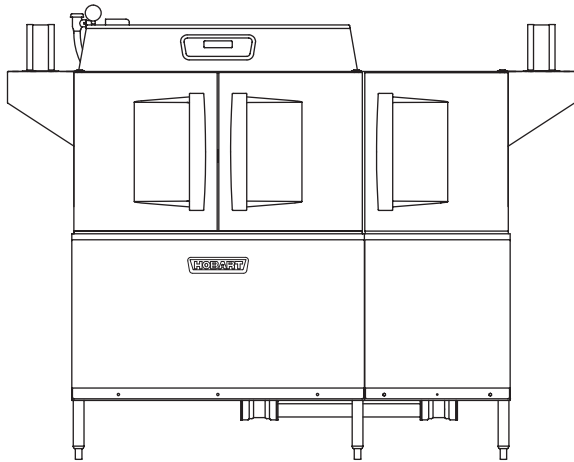




Project \_\_\_\_\_  
 AIA # \_\_\_\_\_ SIS # \_\_\_\_\_  
 Item # \_\_\_\_\_ Quantity \_\_\_\_\_ C.S.I. Section 114000



## CLPS66eN-BAS ELECTRIC High Temperature Rack Conveyor Dishwashing Machine



### SPECIFIER STATEMENT

Specified dishwasher will be Hobart CLPS66eN Base electric tank heat model with Opti-Rinse™. Includes 22" (559 mm) power scrapper, insulated ergonomic cabinet style doors, dirty water indicator, configurable "intelligent" delime notification, top mounted computer controls, and NSF approved pot and pan cycle mode. The wash tank utilizes durable precision pressure sensor monitors in lieu of conventional mechanical floats. The 19.5" (495 mm) standard chamber height will accommodate up to (6) standard sheet pans at a time on an open-end sheet pan rack.

### STANDARD FEATURES

- + 202 racks per hour
- + 22" (559 mm) power scrapper
- + Opti-Rinse™ system
- + Rapid return conveyor drive mechanism
- + Large double door opening for ease of cleaning
- + Doors are insulated & hinged with door interlock switches
- + 19.5" (495 mm) chamber height opening (accepts sheet pans)
- + Top mounted micro-processor control module
- + Energy saver mode (programmable auto-shut down)
- + Dirty water indicator
- + Manager activated low temperature alert
- + NSF rated configurable pot and pan dwell mode
- + Configurable "intelligent" delime notification
- + Service diagnostics
- + Self-aligning wash manifolds
- + Stainless steel anti-clogging wash arms
- + Removable pump intake screen
- + Stainless steel self-draining pump and impeller
- + Single, sloping scrap screen and deep scrap basket
- + Stainless panels enclose perimeter and bottom
- + Door actuated drain closure
- + Convertible hot water or low temp final rinse
- + Vent fan control
- + Booster heater control
- + Power scrapper vent cowl curtain kit
- + ENERGY STAR® Certified

### OPTIONS & ACCESSORIES (Available at extra cost)

- Standard, short, and extended stainless steel vent hoods
- Internal stainless steel pressure-less 30 kW booster heater field convertible to 15 kW (booster includes PRV)
- Direct drive unloader – adds 38" (965 mm) length. Reference spec F39520 for more details
- Side loader – SL23 adds 23" (584 mm) length, SL30 adds 30" (762 mm) length. Reference specs F40926 and F40927 for more details
- Blower-dryer – adds 33¼" (845 mm) to length. Reference spec F40252 for more details (ships separate from dishwashing machine, contact Hobart Service for installation)
- Drain water tempering kit (field installed)
- Flanged feet kit (requires two kits)
- Higher than standard chamber [24" (610 mm) opening]
- Table limit switch with 10' (3 M) wire
- Correctional package (contact Hobart for details)
- Pressure regulator valve (PRV), for use with external booster
- Water shock absorber kit
- Factory-mounted circuit breakers (contact Hobart for details)
- Common electrical connection (see page 4)

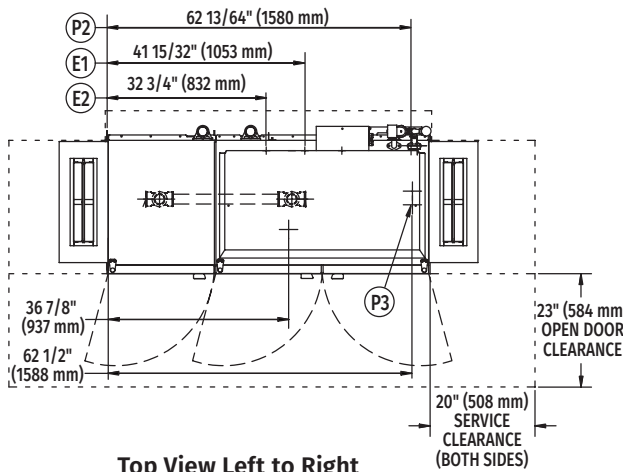
CLEAN SERIES – CLPS66eN-BAS ELECTRIC

Approved by \_\_\_\_\_ Date \_\_\_\_\_ Approved by \_\_\_\_\_ Date \_\_\_\_\_

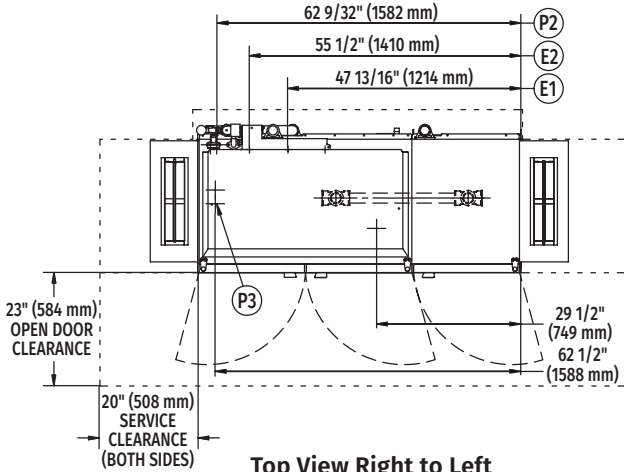


# CLPS66eN-BAS ELECTRIC

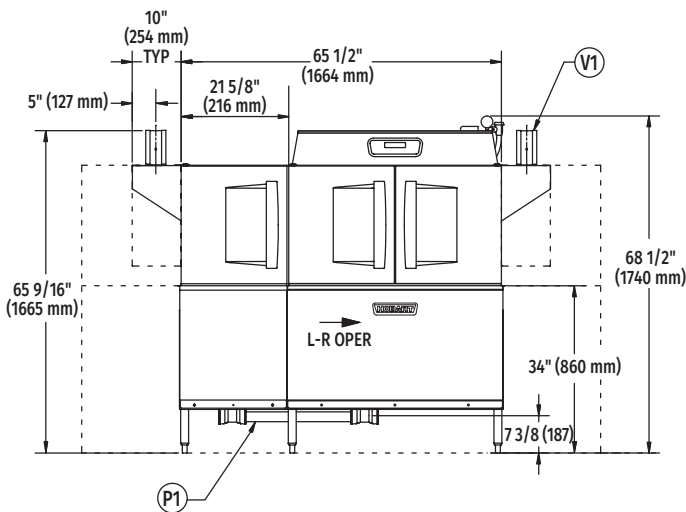
## High Temperature Rack Conveyor Dishwashing Machine



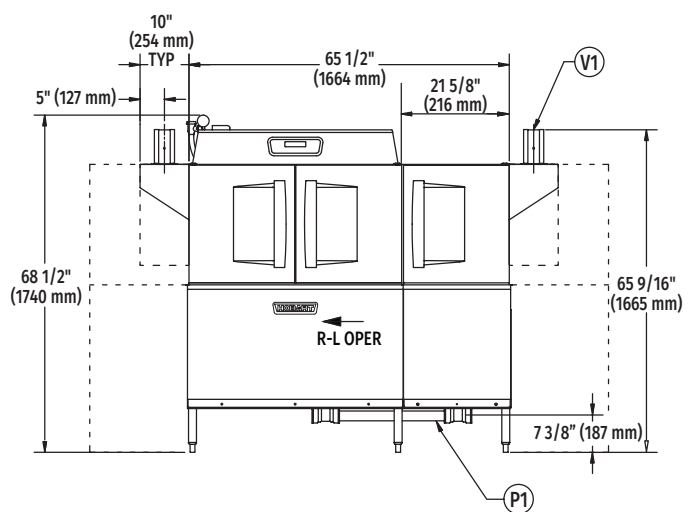
Top View Left to Right



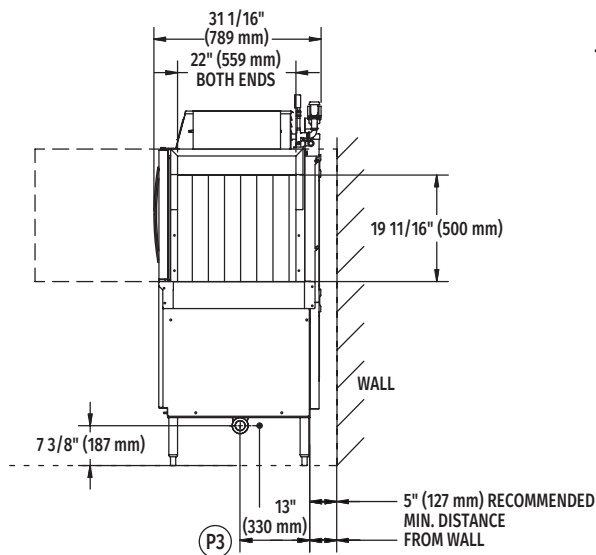
Top View Right to Left



Front View Left to Right

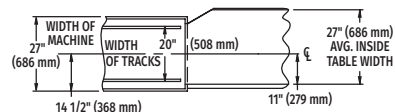


Front View Right to Left

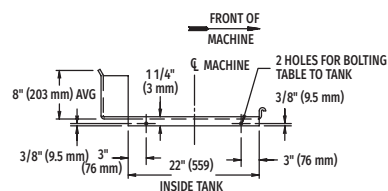


Side View

Tabling Connection: 66" (1676 mm) inside tank (at table connection)



Suggested Track and Table Layout



View Showing Hole Locations in Turned Down Portion of Table



# CLPS66eN-BAS ELECTRIC

## High Temperature Rack Conveyor Dishwashing Machine

### LEGEND

Electrical Connections	
E1	Motors, controls, and electric tank heat 1-1/4" or 2" (32 or 51 mm) conduit, 63-3/4" (1619 mm) AFF.
E2	Internal electric booster 1-1/4" or 2" (32 or 51 mm) conduit, 63-3/4" (1619 mm) AFF.
<b>NOTE:</b> Common electrical connection (single point) available, see page 4 for details.	
Plumbing Connections	
P1	Drain. May be drained to either side of valve, plug opposite side 2" (51 mm) FPT. Recommend a floor drain minimum of 12" (305 mm) from machine for access and maintenance. 7-3/8" (187 mm) AFF.
P2	Hot water. 1/2" (13 mm) FPT connection. 1/2" (13 mm), 11-3/16" (284 mm) AFF. See plumbing notes for required temperatures.
P3	Optional cold water connection for drain water tempering 1/2" (13 mm) FPT, cold water temperature 80°F (27°C), maximum 7-3/8" (187 mm) AFF.
Vent Connections	
V1	Optional vent hoods, 4" x 16" (102 x 406 mm) vent stack with damper.

E1	Electrical Connection (3 PH only) Motors, Controls and Electric Tank Heat		
Voltage	Rated Amps	Minimum Supply Circuit Ampacity	Maximum Protective Device
208/60/3	60.6	80	80
240/60/3	58.0	80	80
480/60/3	30.6	40	40
600/60/3	22.6	35	35

**NOTE:** Electric tank heat can be split from motors & controls, see page 4 for details.

Machine not provided with internal GFCI protection.

**NOTE:** Additional CLeN Voltages and Amperages are available, see document F40972.

**WARNING:** Plumbing and electrical connections should be made by qualified personnel who will observe all the applicable plumbing, sanitary, safety codes and National Electrical Code.

**Plumbing Notes:** Minimum incoming water temperatures: 110°F (43°C) for 30kW internal booster, 140°F (60°C) for 15kW field converted internal booster, 180°F (82°C) without internal booster. Building flowing water pressure to dish machine is 20 PSI (138 kPa), [± 5 PSI (± 34 kPa)]. For non-booster machines, a PRV with internal expansion bypass is required. Recommended water hardness to be 3 grains (51 ppm) or less for best results.

### SPECIFICATIONS

#### Capacities

Racks per Hour (NSF rated)	202
Wash Tank (U.S. gallons/Liters)	23/87
Power Scraper (U.S. gallons/Liters)	23/87
Conveyor Speed (feet/meters per minute)	5.6/1.7

#### Motor Horsepower (watts)

Drive	1/6 (124)
Wash	2 (1492)
Power Scraper	2 (1492)

#### Water Consumption

U.S. Gallons (L) per Hour (maximum use at 20 PSI/138 kPa)	126 (477)
U.S. Gallons (L) per Rack	0.62 (2.35)
Peak Drain Flow [U.S. gallons (L) per minute]	38 (144)

#### Heating

Tank Heat, Electric (kW)	15
Optional Electric Booster (built-in) [kW for 40°F (22°C) rise]	15
Optional Electric Booster (built-in) [kW for 70°F (39°C) rise]	30

#### Venting

Load End (minimum FT <sup>3</sup> /M <sup>3</sup> per minute)	200/5.67
Unload End (minimum FT <sup>3</sup> /M <sup>3</sup> per minute)	400/11.3

**Shipping Weight (approximate)** 855 lbs. /388 kg

**Crated Dimensions.** 76"L x 38"W x 78"H (1930 x 965 x 1981 mm)

E2	Booster Heat 30 kW (Standard) Minimum 110°F (43°C) Incoming Water		
Voltage	Rated Amps	Minimum Supply Circuit Ampacity	Maximum Protective Device
208/60/3	83.9	90	90
240/60/3	80.2	90	90
480/60/3	40.1	50	50
600/60/3	26.9	40	40

E2	Booster Heat 15 kW (Field Convertible) Minimum 140°F (60°C) Incoming Water		
Voltage	Rated Amps	Minimum Supply Circuit Ampacity	Maximum Protective Device
208/60/3	45.0	60	60
240/60/3	40.1	50	50
480/60/3	20.0	25	25
600/60/3	13.5	20	20

CLPS66eN-BAS Electric Heat Dissipation		
Booster	BTU/HR.	
	Latent	Sensible
Without Booster	15,800	6,800
15kW Booster	29,300	12,600
30kW Booster	42,900	18,400



# CLPS66eN-BAS ELECTRIC

High Temperature Rack Conveyor  
Dishwashing Machine

## COMMON ELECTRICAL CONNECTION (SINGLE POINT) – CONTACT FACTORY FOR ADDITIONAL INFORMATION

Common Electrical Connection (Includes Motors & Controls, Electric Tank Heat, & Electric Booster Heater)						
Voltage	MACHINE AND 15kW BOOSTER			MACHINE AND 30kW BOOSTER		
	Rated Amps	Minimum Supply Circuit Ampacity	Maximum Protective Device	Rated Amps	Minimum Supply Circuit Ampacity	Maximum Protective Device
208/60/3	106	125	125	145	175	175
240/60/3	98	110	110	138	150	150
480/60/3	51	60	60	71	90	90
600/60/3	36.1	55	55	49.5	75	75

## FIELD CONVERTIBLE SERVICE CONNECTIONS

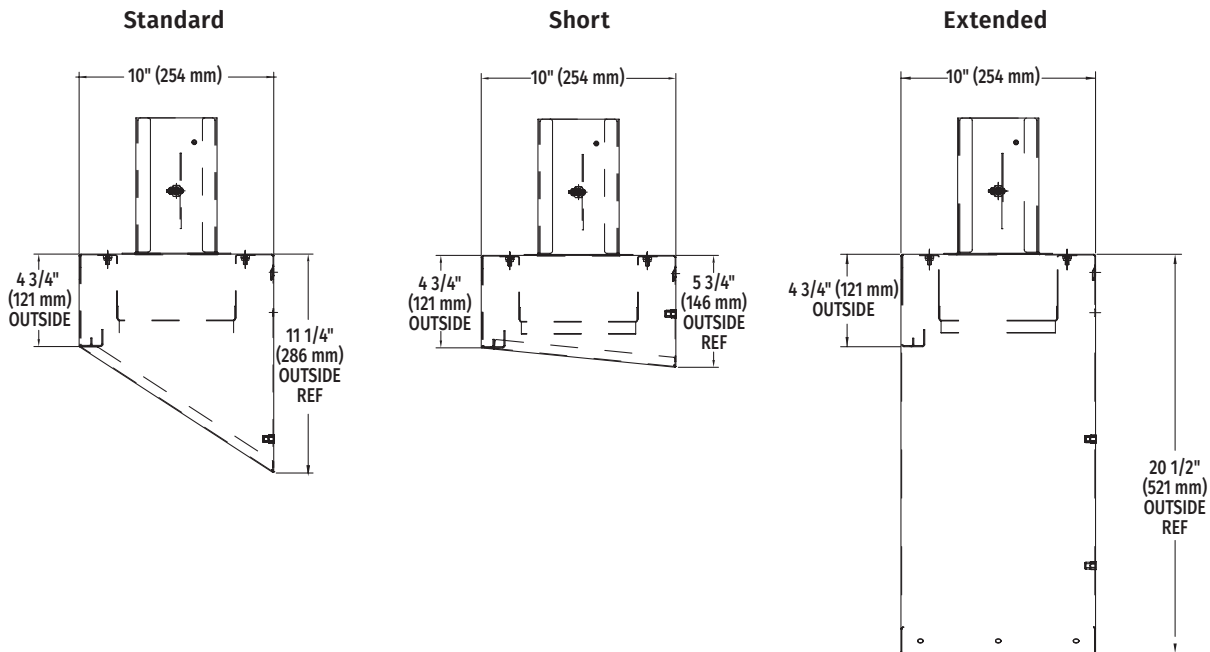
At time of installation, service connections for motors, controls, and electric tank heat can be split as necessary for installation.

Separate Service Connection for Electric Heat			
Voltage	Rated Amps	Minimum Supply Circuit Ampacity	Maximum Protective Device
208/60/3	45.0	60	60
240/60/3	43.0	60	60
480/60/3	22.0	30	30
600/60/3	14.4	20	20

Separate Service Connection for Motors & Controls			
Voltage	Rated Amps	Minimum Supply Circuit Ampacity	Maximum Protective Device
208/60/3	15.6	20	20
240/60/3	15.1	20	20
480/60/3	9.1	20	20
600/60/3	8.2	15	15

**NOTE:** Additional CLeN Voltages and Amperages are available, see document F40972.

## VENT HOOD OPTIONS (Adjustable, vent stack can be adjusted 1" (25 MM) to either side)



As continued product improvement is a policy of Hobart, specifications are subject to change without notice.