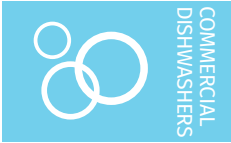
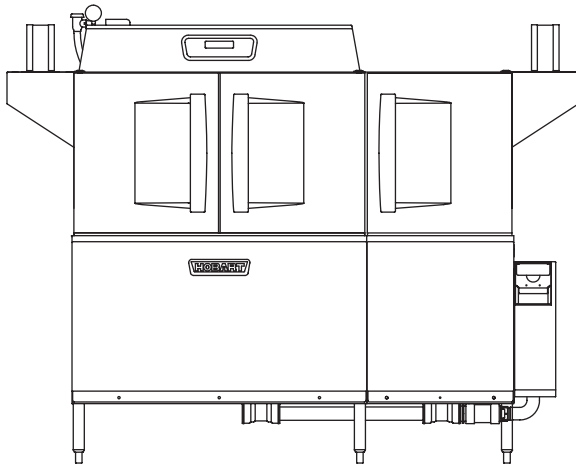




Project _____
 AIA # _____ SIS # _____
 Item # _____ Quantity _____ C.S.I. Section 114000



CLPS66eN-ADV **advansys** ELECTRIC High Temperature Rack Conveyor Dishwashing Machine



STANDARD FEATURES

- + 202 racks per hour
- + 22" (559 mm) power scrapper
- + Drain water energy recovery (DWER)
- + Automatic soil removal (ASR)
- + Opti-Rinse™ system
- + Drain water tempering kit
- + Rapid return conveyor drive mechanism
- + Internal stainless steel pressure-less 30 KW booster heater
- + Large double door opening for ease of cleaning
- + Doors are insulated & hinged with door interlock switches
- + 19.5" (495 mm) chamber height opening (accepts sheet pans)
- + Top mounted micro-processor control module
- + Energy saver mode (programmable auto-shut down)
- + Dirty water indicator
- + Manager activated low temperature alert
- + NSF rated configurable pot and pan dwell mode
- + Configurable "intelligent" delime notification
- + Service diagnostics
- + Self-aligning wash manifolds
- + Stainless steel anti-clogging wash arms
- + Removable pump intake screen
- + Stainless steel self-draining pump and impeller
- + Single, sloping scrap screen and deep scrap basket
- + Stainless panels enclose perimeter and bottom
- + Door actuated drain closure
- + Vent fan control
- + Booster heater control
- + Power scrapper vent cowl curtain kit
- + ENERGY STAR® Certified



SPECIFIER STATEMENT

Specified dishwasher will be Hobart CLPS66eN Advansys electric tank heat model with drain water energy recovery (DWER), automatic soil removal (ASR) and Opti-Rinse™. Includes 22" (559 mm) power scrapper, insulated ergonomic cabinet style doors, dirty water indicator, configurable "intelligent" delime notification, top mounted computer controls, and NSF approved pot and pan cycle mode. The wash tank utilizes durable precision pressure sensor monitors in lieu of conventional mechanical floats. The 19.5" (495 mm) standard chamber height will accommodate up to (6) standard sheet pans at a time on an open-end sheet pan rack.

OPTIONS & ACCESSORIES (Available at extra cost)

- Standard, short, and extended stainless steel vent hoods
- Direct drive unloader – adds 38" (965 mm) length. Reference spec F39520 for more details
- Side loader – SL23 adds 23" (584 mm) length, SL30 adds 30" (762 mm) length. Reference specs F40926 and F40927 for more details
- Blower-dryer – adds 33 3/8" (841 mm) to length. Reference spec F40252 for more details (ships separate from dish machine, contact Hobart Service for installation)
- Flanged feet kit (requires two kits)
- Higher than standard chamber [24" (610 mm) opening]
- Table limit switch with 10' (3048 mm) wire
- Correctional package (contact Hobart for details)
- Pressure regulator valve (PRV), for use with external booster
- Water shock absorber kit
- Factory-mounted circuit breakers (contact Hobart for details)
- Common electrical connection (see page 4)

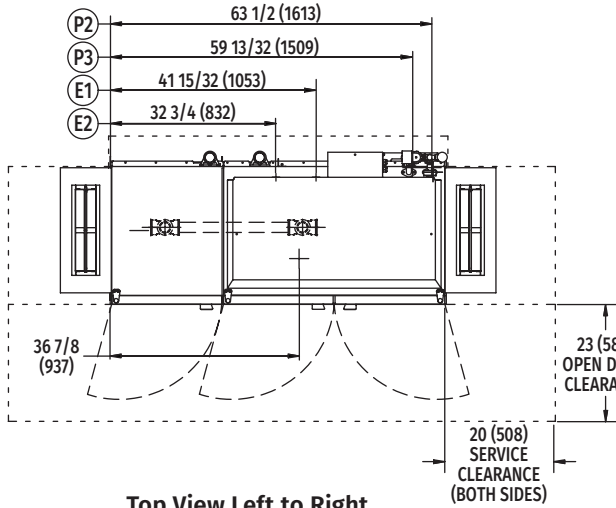
Approved by _____ Date _____ Approved by _____ Date _____



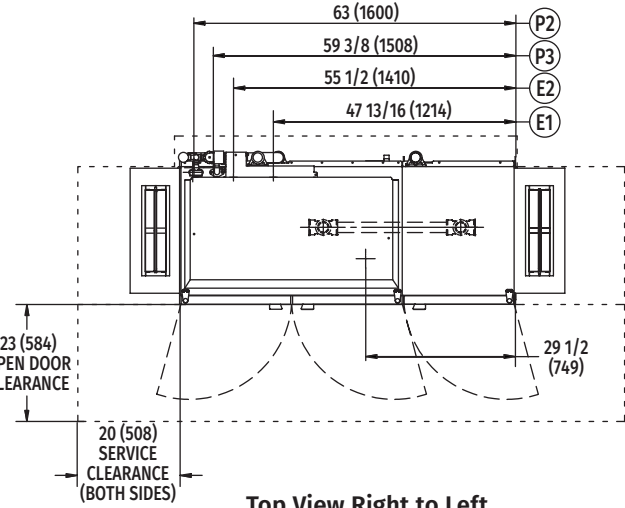
CLPS66eN-ADV *advansys* ELECTRIC

High Temperature Rack Conveyor Dishwashing Machine

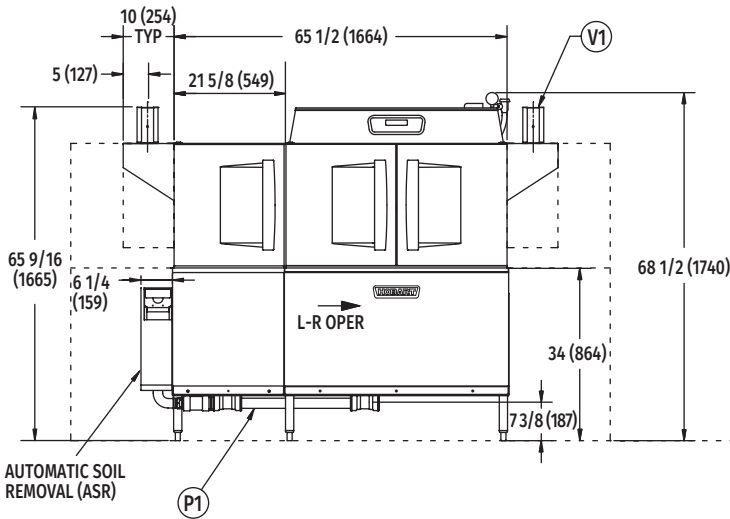
Primary dimensions inches (secondary millimeters)



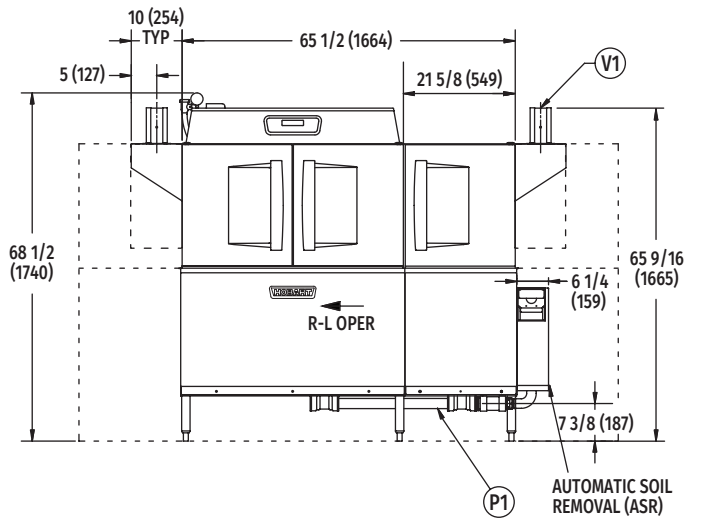
Top View Left to Right



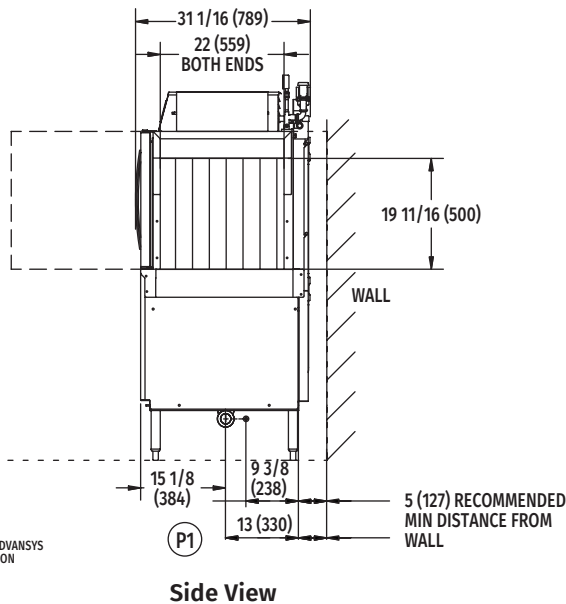
Top View Right to Left



Front View Left to Right

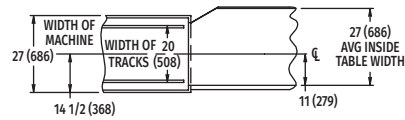


Front View Right to Left

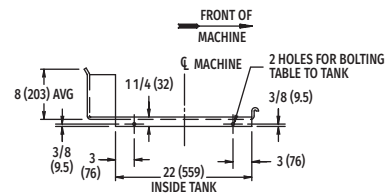


Side View

Tabling Connection: 66" (1676) inside tank (at table connection)



Suggested Track and Table Layout



View Showing Hole Locations in Turned Down Portion of Table

MODEL: CLPS66eN ADVANSYS
L-R OPERATION
D-974807
REV B

MODEL: CLPS66eN ADVANSYS
R-L OPERATION
D-974806
REV B



CLPS66eN-ADV *advansys* ELECTRIC

High Temperature Rack Conveyor Dishwashing Machine

LEGEND

Electrical Connections	
E1	Motors, controls, and electric tank heat 1-1/4" or 2" (32 or 51 mm) conduit, 63-3/4" (1619) AFF.
E2	Internal electric booster 1-1/4" or 2" (32 or 51 mm) conduit, 63-3/4" (1619 mm) AFF.
NOTE: Common electrical connection (single point) available, see page 4 for details.	
Plumbing Connections	
P1	Drain. May be drained to either side of valve, plug opposite side 2" (51 mm) FPT. Recommend a floor drain minimum of 12" (305 mm) from machine for access and maintenance. 7-3/8" (187 mm) AFF.
P2	Hot water. 1/2" (13 mm) FPT connection. 1/2" (13 mm), 11-3/16" (284 mm) AFF. See plumbing notes for required temperatures.
P3	Cold water connection 1/2" (13 mm) FPT, cold water temperature 80°F (27°C), maximum 7-3/8" (187) AFF.
Vent Connections	
V1	Optional vent hoods, 4" x 16" (102 x 406 mm) vent stack with damper.

SPECIFICATIONS

Capacities

Racks per Hour (NSF rated)	202
Wash Tank (U.S. gallons/Liters)	23/87
Power Scrapper (U.S. gallons/Liters).	23/87
Conveyor Speed (feet per minute).	5.6/1.7

Motor Horsepower (Watts)

Drive	1/6 (124)
Wash	2 (1492)
Power Scrapper	2 (1492)
ASR	1/2 (373)

Water Consumption

U.S. Gallons (L) per Hour (maximum use at 20 PSI/138 kPa)	126 (477)
U.S. Gallons (L) per Rack	0.62 (2.35)
Peak Drain Flow (U.S. gallons/L per minute)38 (144)

Heating

Tank Heat, Electric (kW)	15
Electric Booster (built-in) [kW for 70°F (39°C) rise]	30

Venting

Load End (minimum FT ³ /M ³ per minute)	200/5.67
Unload End (minimum FT ³ /M ³ per minute)400/11.3

Shipping Weight (approximate) 942 lbs./427 kg

Crated Dimensions 76"L x 38"W x 78"H (1930 x 965 x 1981 mm)

E1	Electrical Connection (3 PH only) Motors, Controls and Electric Tank Heat		
	Voltage	Rated Amps	Minimum Supply Circuit Ampacity
	208/60/3	60.6	80
	240/60/3	58.0	80
	480/60/3	30.6	40
	600/60/3	22.6	35
NOTE: Electric tank heat can be split from motors & controls, see page 4 for details.			

Dishwashing machine not provided with internal GFCI protection.

NOTE: Additional CLeN Voltages and Amperages are available, see document F40972.

WARNING: Plumbing and electrical connections should be made by qualified personnel who will observe all the applicable plumbing, sanitary, safety codes and National Electrical Code.

Plumbing Notes: Minimum incoming water temperatures: 110°F (43°C) for 30kW internal booster. Building flowing water pressure to dish machine is 20 PSI (138 kPa) [± 5 PSI (± 34 kPa)].

Single cold water connection supplies both drain water energy recovery and drain water tempering.

Recommended water hardness to be 3 grains (51 ppm) or less for best results.

E2	Booster Heat 30 kW Minimum 110°F (43°C) Incoming Water		
	Voltage	Rated Amps	Minimum Supply Circuit Ampacity
	208/60/3	83.9	90
	240/60/3	80.2	90
	480/60/3	40.1	50
	600/60/3	26.9	40

CLPS66eN-ADV Electric Heat Dissipation	
BTU/HR.	
Latent	Sensible
43,200	18,500



CLPS66eN-ADV *advansys* ELECTRIC

High Temperature Rack Conveyor
Dishwashing Machine

COMMON ELECTRICAL CONNECTION (SINGLE POINT) – CONTACT FACTORY FOR ADDITIONAL INFORMATION

Common Electrical Connection (Includes Motors & Controls, Electric Tank Heat, & Electric Booster Heater)			
Voltage	MACHINE AND 30kW BOOSTER		
	Rated Amps	Minimum Supply Circuit Ampacity	Maximum Protective Device
208/60/3	145	175	175
240/60/3	138	150	150
480/60/3	71	90	90
600/60/3	49.5	75	75

FIELD CONVERTIBLE SERVICE CONNECTIONS

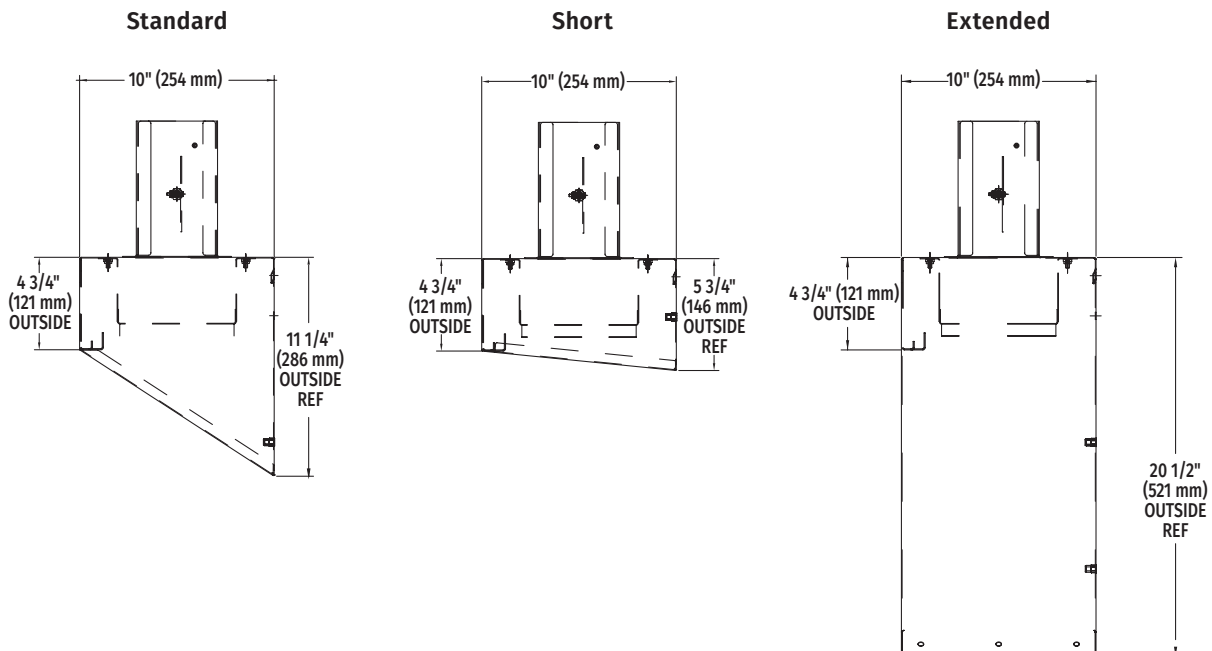
At time of installation, service connections for motors, controls, and electric tank heat can be split as necessary for installation.

Separate Service Connection for Electric Heat			
Voltage	Rated Amps	Minimum Supply Circuit Ampacity	Maximum Protective Device
208/60/3	45.0	60	60
240/60/3	43.0	60	60
480/60/3	22.0	30	30
600/60/3	14.4	20	20

Separate Service Connection for Motors & Controls			
Voltage	Rated Amps	Minimum Supply Circuit Ampacity	Maximum Protective Device
208/60/3	15.6	20	20
240/60/3	15.1	20	20
480/60/3	9.1	15	15
600/60/3	8.2	15	15

NOTE: Additional CLeN Voltages and Amperages are available, see document F40972.

VENT HOOD OPTIONS (Adjustable, vent stack can be adjusted 1" (25.4 mm) to either side)



As continued product improvement is a policy of Hobart, specifications are subject to change without notice.