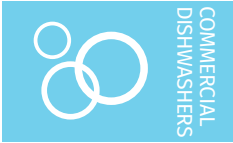
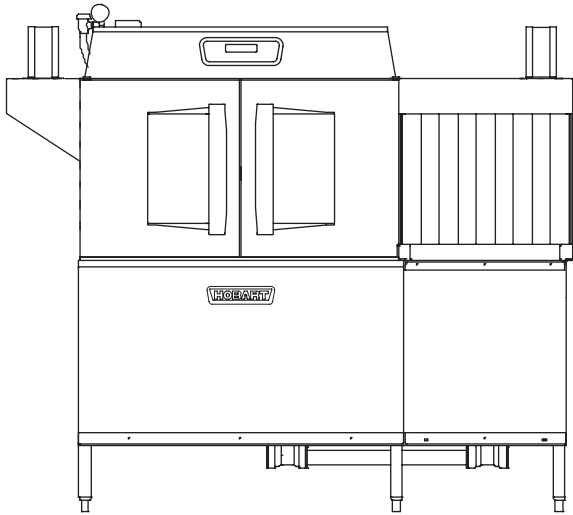




Project \_\_\_\_\_  
 AIA # \_\_\_\_\_ SIS # \_\_\_\_\_  
 Item # \_\_\_\_\_ Quantity \_\_\_\_\_ C.S.I. Section 114000



## CLCS66eN-BAS STEAM High Temperature Corner Scrapper Rack Conveyor Dishwashing Machine



### SPECIFIER STATEMENT

Specified dishwasher will be Hobart CLCS66eN Base steam tank heat model with corner scrapper and Opti-Rinse™. Includes 22" (559 mm) power scrapper, dirty water indicator, configurable "intelligent" delime notification, insulated ergonomic cabinet style doors, top mounted computer controls, and NSF approved pot and pan cycle mode. The wash tank utilizes durable precision pressure sensor monitors in lieu of conventional mechanical floats.

### STANDARD FEATURES

- + 202 racks per hour
- + 22" (559 mm) power scrapper
- + Opti-Rinse™ system
- + Rapid return conveyor drive mechanism
- + Large double door opening for ease of cleaning
- + Doors are insulated & hinged with door interlock switches
- + 19.5" (495 mm) chamber height opening (accepts sheet pans)
- + Top mounted micro-processor control module
- + Energy saver mode (programmable auto-shut down)
- + Dirty water indicator
- + Manager activated low temperature alert
- + NSF rated configurable pot and pan dwell mode
- + Configurable "intelligent" delime notification
- + Service diagnostics
- + Self-aligning wash manifolds
- + Stainless steel anti-clogging wash arms
- + Removable pump intake screen
- + Stainless steel self-draining pump and impeller
- + Single, sloping scrap screen and deep scrap basket
- + Stainless panels enclose perimeter and bottom
- + Door actuated drain closure
- + Convertible hot water or low temp final rinse
- + Vent fan control
- + Booster heater control

### OPTIONS & ACCESSORIES (Available at extra cost)

- Standard, short, and extended stainless steel vent hoods
- Internal stainless steel pressure-less 30 kW booster heater field convertible to 15 kW (booster includes PRV)
- External #150 steam booster heater
- Direct drive unloader – adds 38" (965 mm) length. Reference spec F39520 for more details
- Side loader – SL23 adds 23" (584 mm) length, SL30 adds 30" (762 mm) length. Reference specs F40926 and F40927 for more details
- Blower-dryer – adds 33¼" (845 mm) to length. Reference spec F40252 for more details (ships separate from dish machine, contact Hobart Service for installation)
- Drain water tempering kit (field installed)
- Flanged feet kit (requires two kits)
- Higher than standard chamber [(24" (610 mm) opening]
- Table limit switch with 10' (3 M) wire
- Correctional package (contact Hobart for details)
- Pressure regulator valve (PRV), for use with external booster
- Water shock absorber kit
- Factory-mounted circuit breakers (contact Hobart for details)
- Common electrical connection (see page 4)

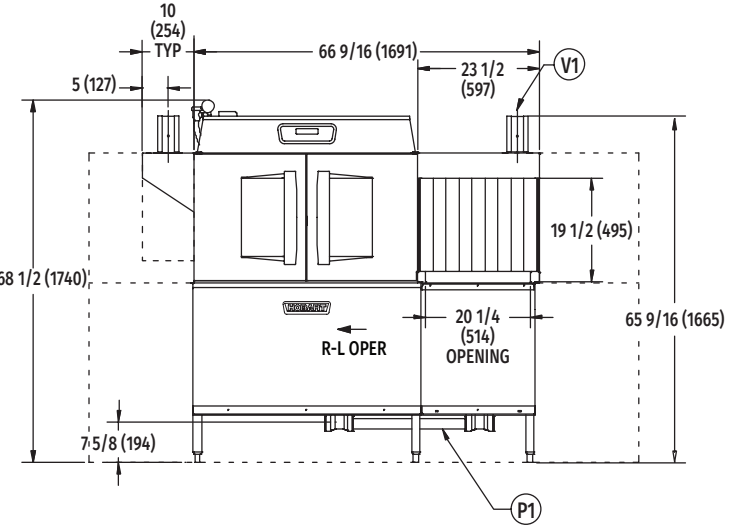
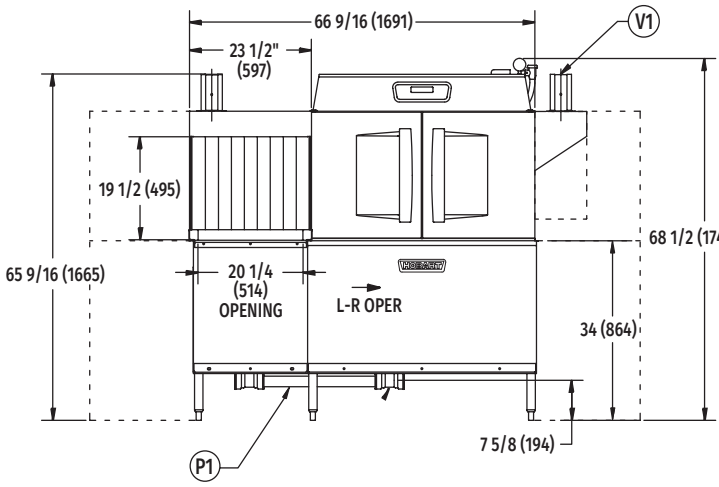
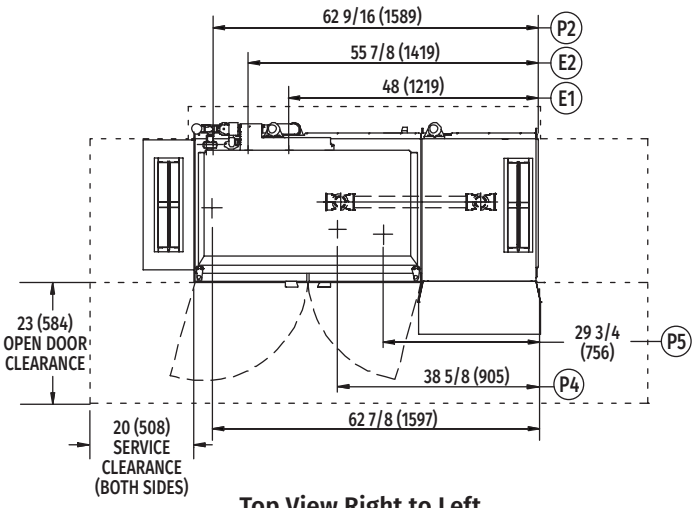
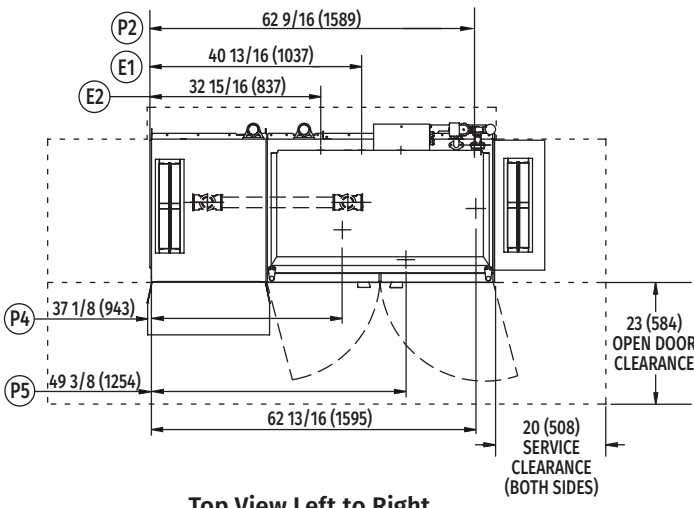
CLEAN SERIES – CLCS66eN-BAS STEAM

Approved by \_\_\_\_\_ Date \_\_\_\_\_ Approved by \_\_\_\_\_ Date \_\_\_\_\_



# CLCS66eN-BAS STEAM

## High Temperature Corner Scrapper Rack Conveyor Dishwashing Machine

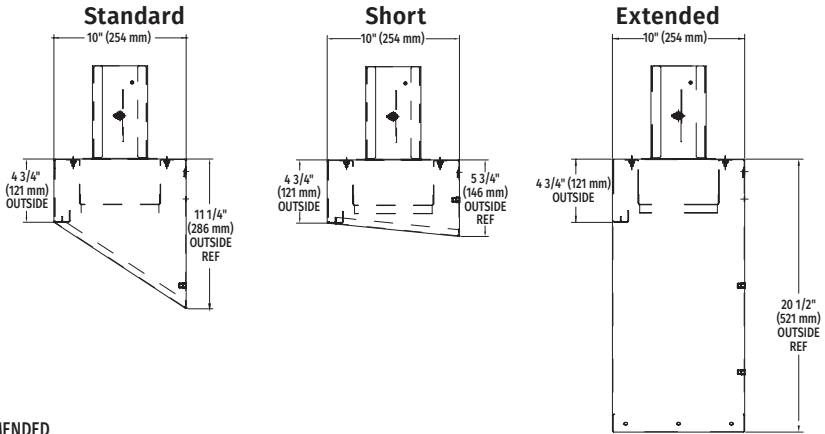
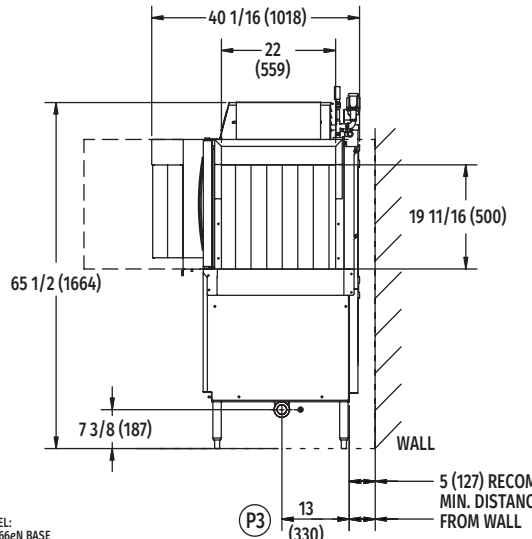


Front View Left to Right

Front View Right to Left

### VENT HOOD OPTIONS

(Adjustable, vent stack can be adjusted 1" (25 mm) to either side)



Reference page 4 for installation drawings

MODEL: CLCS66eN BASE  
L-R OPERATION  
D-974813  
REV B

MODEL: CLCS66eN BASE  
R-L OPERATION  
D-974812  
REV B



# CLCS66eN-BAS STEAM

## High Temperature Corner Scrapper Rack Conveyor Dishwashing Machine

### LEGEND

Electrical Connections	
E1	Motors and controls 1-1/4" or 2" (32 or 51 mm) conduit, 63-3/4" (1619 mm) AFF.
E2	Internal electric booster 1-1/4" or 2" conduit (32 or 51 mm), 63-3/4" (1619 mm) AFF.
<b>NOTE:</b> Common electrical connection (single point) available, see page 4 for details. Booster information, see page 4.	
Plumbing Connections	
P1	Drain. May be drained to either side of valve, plug opposite side 2" (51 mm) FPT. Recommend a floor drain minimum of 12" (305 mm) from machine for access and maintenance. 7-3/8" (187 mm) AFF.
P2	Hot water. 1/2" (13 mm) FPT connection. 1/2" (13 mm), 11-3/16" (284 mm) AFF. See plumbing notes for required temperatures.
P3	Optional cold water connection for drain water tempering 1/2" (13 mm) FPT, cold water temperature 80°F, maximum 7-3/8" (187 mm) AFF.
Steam Connections	
P4	Steam coils: 10 to 50 PSI (69 to 348 kPa) flowing, 3/4" (19 mm) FPT, 11-1/8" (283 mm) AFF.
P5	Condensate return: A 10 PSI (69 kPa) minimum differential pressure across the steam trap must be maintained. 3/4" (19 mm) FPT, 11-1/8" (283 mm) AFF one connection. (One bucket type trap furnished).
Vent Connections	
V1	Optional vent hoods, 4" x 16" (102 x 406 mm) vent stack with damper.

**WARNING: Plumbing and electrical connections should be made by qualified personnel who will observe all the applicable plumbing, sanitary, safety codes and National Electrical Code.**

**Plumbing Notes:** Minimum incoming water temperatures: 110°F (43°C) for 30kW internal booster, 140°F (60°C) for 15kW field converted internal booster, 180°F (82°C) without internal booster. Building flowing water pressure to dish machine is 20 PSI (138 kPa), (+/- 5 PSI/34 kPa). For non-booster machines, a PRV with internal expansion bypass is required. When ordered as an accessory, 1/2" (13 mm) brass regulator must be installed before the booster. Water temperature to the regulator must not exceed 140°F (60°C).

Recommended water hardness to be 3 grains (51 ppm) or less for best results.

**Steam Heat Only:** Flowing steam pressures above 50 PSI (345 kPa) must have a pressure regulator (by others) installed in the steam line.

Shut off valve must be supplied (by others) in the steam line to the dish machine.

### SPECIFICATIONS

#### Capacities

Racks per Hour (NSF rated) . . . . .	202
Wash Tank (U.S. gallons/Liters) . . . . .	23 (87)
Power Scrapper (U.S. gallons/Liters). . . . .	23 (87)
Conveyor Speed (feet/M per minute) . . . . .	5.6 (1.7)

#### Motor Horsepower (kW)

Drive . . . . .	1/6 (0.12)
Wash . . . . .	2 (1.5)
Power Scrapper . . . . .	2 (1.5)

#### Water Consumption

U.S. Gallons/Liters per Hour (maximum use at 20 PSI/138 kPa) . . . . .	126 (477)
U.S. Gallons/Liters per Rack . . . . .	0.62 (2.35)
Peak Drain Flow (U.S. gallons/Liters per minute) . . . . .	38 (144)

#### Heating

Tank Heat, steam coils (pounds/kg per hour) . . . . .	65 (29)
Optional Electric Booster (built-in) (kW for 40°F/22°C rise) . . . . .	15
Optional Electric Booster (built-in) (kW for 70°F/39°C rise) . . . . .	30
Optional Steam Booster (external) (pounds/kg per hour) . . . . .	60 (27)
(If used on 20 PSI/138 kPa steam, 20 PSI/138 kPa water flowing, 130°F/54°C entering water raised to 180°F/82°C minimum)	

#### Venting

Load End (minimum F <sup>3</sup> /M <sup>3</sup> per minute) . . . . .	200 (5.67)
Unload End (minimum F <sup>3</sup> /M <sup>3</sup> per minute) . . . . .	400 (11.3)

**Shipping Weight (approximate) . . . . .** 855 lbs. (388 kg)

**Crated Dimensions. . . . .** 76"L x 38"W x 78"H (1930 x 965 x 1981)

E1	Electrical Connection (3 PH only) Motors and Controls		
Voltage	Rated Amps	Minimum Supply Circuit Ampacity	Maximum Protective Device
208/60/3	16.6	20	20
240/60/3	16.6	20	20
480/60/3	9.4	15	15

Dish machine not provided with internal GFCI protection.

**NOTE:** Additional CLeN Voltages and Amperages are available, see document F40972.

CLCS66eN-BAS Steam Heat Dissipation		
Booster	BTU/HR.	
	Latent	Sensible
Without Booster	18,900	8,100
15kW Booster	32,500	13,900
30kW Booster	46,100	19,700



# CLCS66eN-BAS STEAM

## High Temperature Corner Scrapper Rack Conveyor Dishwashing Machine

E2	Booster Heat 30 kW (Standard) Minimum 110°F (43°C) Incoming Water		
Voltage	Rated Amps	Minimum Supply Circuit Ampacity	Maximum Protective Device
208/60/3	83.9	90	90
240/60/3	80.2	90	90
480/60/3	40.1	50	50

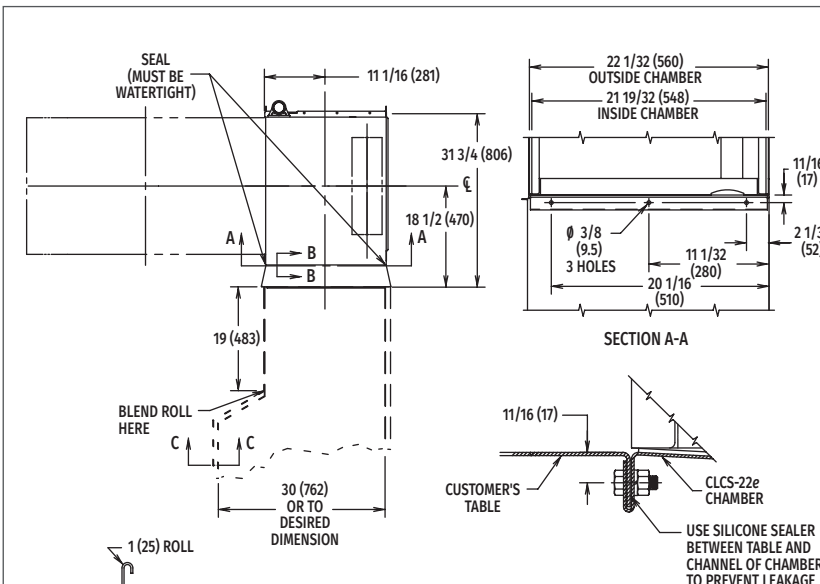
E2	Booster Heat 15 kW (Field Convertible) Minimum 140°F (60°C) Incoming Water		
Voltage	Rated Amps	Minimum Supply Circuit Ampacity	Maximum Protective Device
208/60/3	45.0	60	60
240/60/3	40.1	50	50
480/60/3	20.0	25	25

### COMMON ELECTRICAL CONNECTION (SINGLE POINT) – CONTACT FACTORY FOR ADDITIONAL INFORMATION

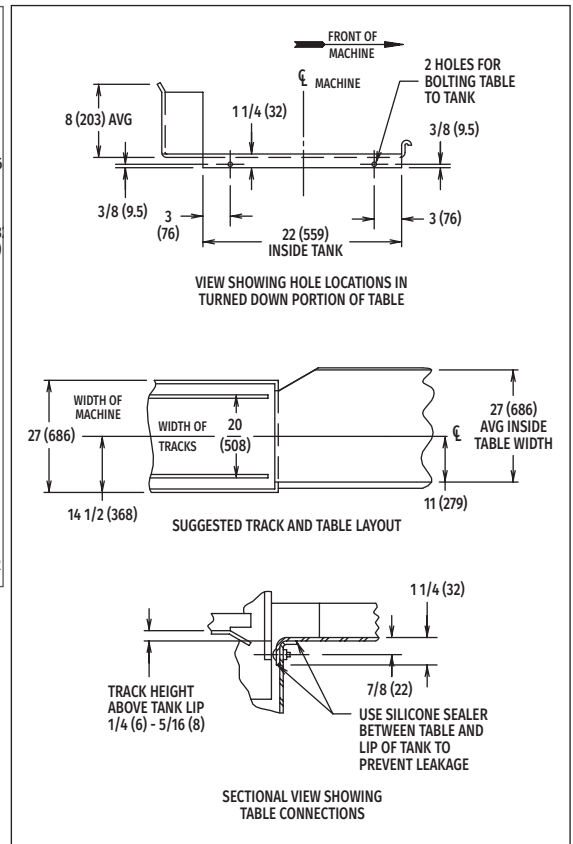
Common Electrical Connection (Includes Motors & Controls and Electric Booster Heater)						
Voltage	MACHINE AND 15kW BOOSTER			MACHINE AND 30kW BOOSTER		
	Rated Amps	Minimum Supply Circuit Ampacity	Maximum Protective Device	Rated Amps	Minimum Supply Circuit Ampacity	Maximum Protective Device
208/60/3	61.3	80	80	100.2	110	110
240/60/3	61.3	80	80	100.2	110	110
480/60/3	29.4	40	40	49.5	70	70

**NOTE:** Additional CLeN Voltages and Amperages are available, see document F40972.

### TABLING - LOAD END



### TABLING - UNLOAD END



As continued product improvement is a policy of Hobart, specifications are subject to change without notice.