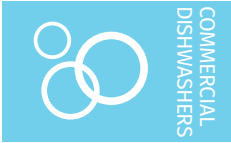
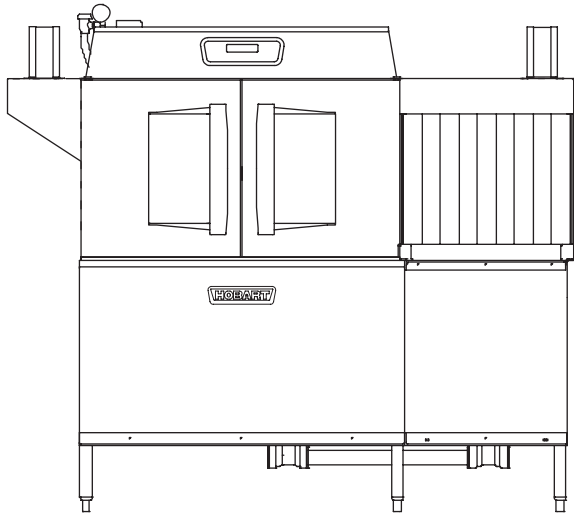




Project _____
 AIA # _____ SIS # _____
 Item # _____ Quantity _____ C.S.I. Section 114000



CLCS66eN-EGR STEAM High Temperature Corner Scrapper Rack Conveyor Dishwashing Machine



SPECIFIER STATEMENT

Specified dishwasher will be Hobart CLCS66eN Energy Recovery steam tank heat model with corner scrapper, drain water energy recovery (DWER) and Opti-Rinse™. Includes 22" (559 mm) power scrapper, insulated ergonomic cabinet style doors, dirty water indicator, configurable "intelligent" delime notification, top mounted computer controls, and NSF approved pot and pan cycle mode. The wash tank utilizes durable precision pressure sensor monitors in lieu of conventional mechanical floats.

STANDARD FEATURES

- + 202 racks per hour
- + 22" (559 mm) power scrapper
- + Drain water energy recovery (DWER)
- + Opti-Rinse™ system
- + Drain water tempering kit
- + Rapid return conveyor drive mechanism
- + Internal stainless steel pressure-less 30 KW booster heater
- + Large double door opening for ease of cleaning
- + Doors are insulated & hinged with door interlock switches
- + 19.5" (495 mm) chamber height opening (accepts sheet pans)
- + Top mounted micro-processor control module
- + Energy saver mode (programmable auto-shut down)
- + Dirty water indicator
- + Manager activated low temperature alert
- + NSF rated configurable pot and pan dwell mode
- + Configurable "intelligent" delime notification
- + Service diagnostics
- + Self-aligning wash manifolds
- + Stainless steel anti-clogging wash arms
- + Removable pump intake screen
- + Stainless steel self-draining pump and impeller
- + Single, sloping scrap screen and deep scrap basket
- + Stainless panels enclose perimeter and bottom
- + Door actuated drain closure
- + Vent fan control
- + Booster heater control

OPTIONS & ACCESSORIES (Available at extra cost)

- Standard, short, and extended stainless steel vent hoods
- Direct drive unloader – adds 38" (965 mm) length. Reference spec F39520 for more details
- Side loader – SL23 adds 23" (584) length, SL30 adds 30" (762 mm) length. Reference specs F40926 and F40927 for more details
- Blower-dryer – adds 33 1/8" (845 mm) to length. Reference spec F40252 for more details (**ships separate from dish machine, contact Hobart Service for installation**)
- Flanged feet kit (requires two kits)
- Higher than standard chamber [24" (610 mm) opening]
- Table limit switch with 10' (3 M) wire
- Correctional package (contact Hobart for details)
- Pressure regulator valve (PRV), for use with external booster
- Water shock absorber kit
- Factory-mounted circuit breakers (contact Hobart for details)
- Common electrical connection (see page 4)

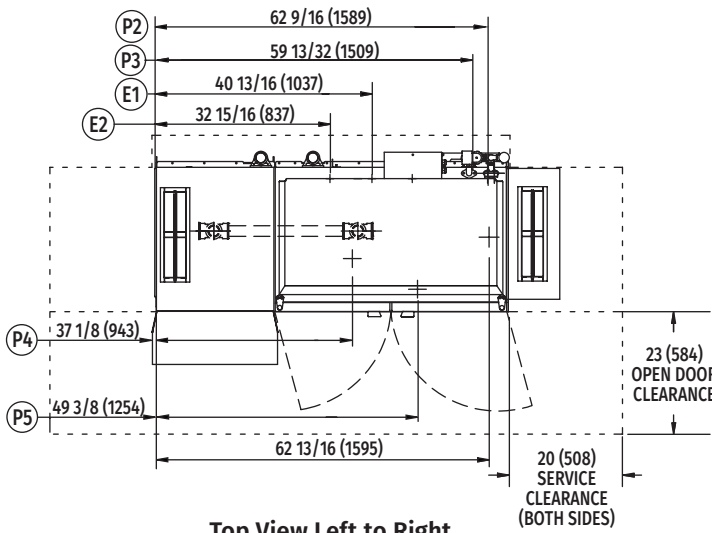
CLEAN SERIES – CLCS66eN-EGR STEAM

Approved by _____ Date _____ Approved by _____ Date _____

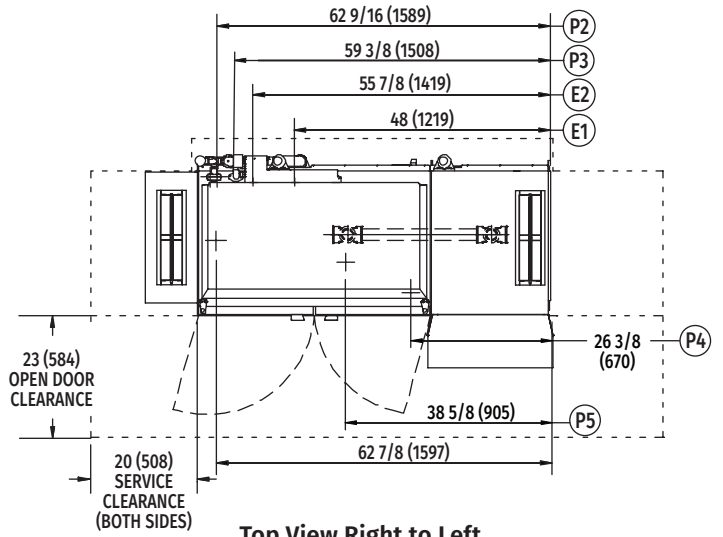


CLCS66eN-EGR STEAM

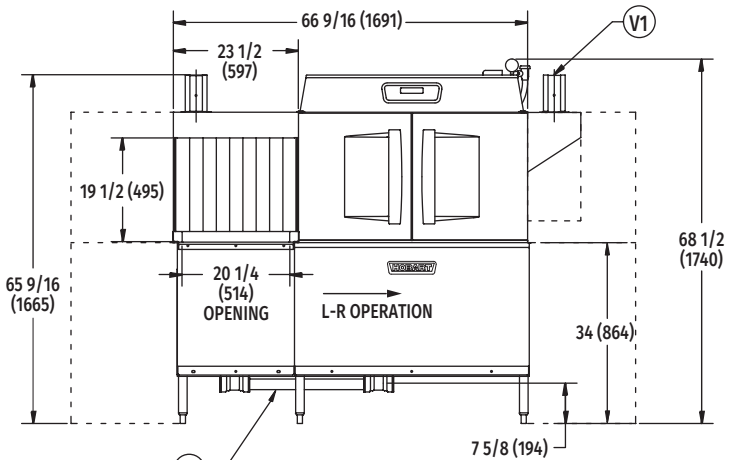
High Temperature Corner Scrapper Rack Conveyor Dishwashing Machine



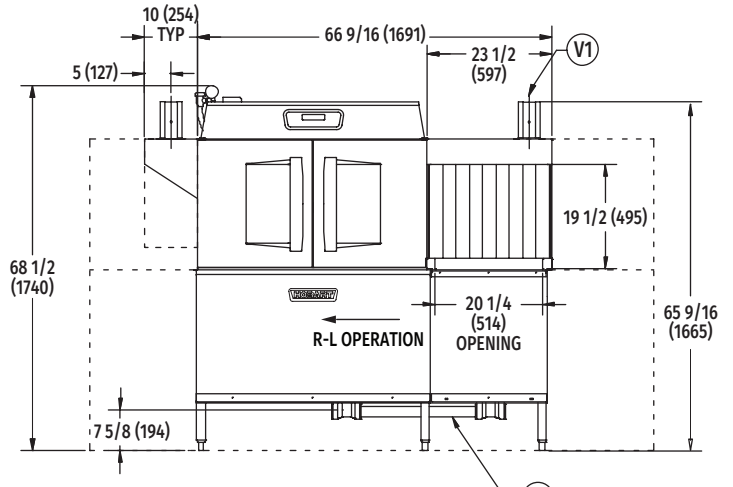
Top View Left to Right



Top View Right to Left



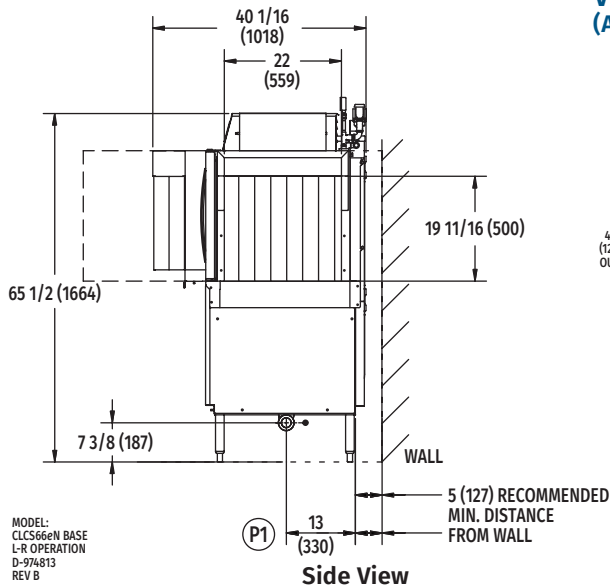
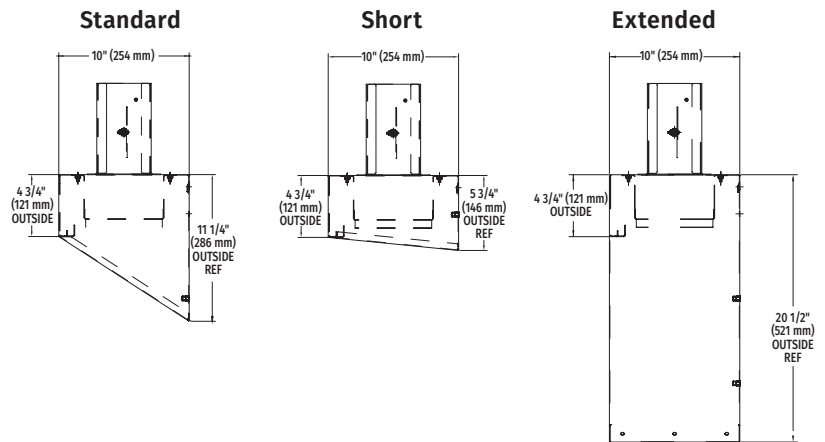
Front View Left to Right



Front View Right to Left

VENT HOOD OPTIONS

(Adjustable, vent stack can be adjusted 1" (25 mm) to either side)



Side View

Reference page 4 for installation drawings

MODEL: CLCS66eN BASE R-L OPERATION D-974813 REV B



CLCS66eN-EGR STEAM High Temperature Corner Scrapper Rack Conveyor Dishwashing Machine

LEGEND

Electrical Connections	
E1	Motors and controls 1-1/4" or 2" (32 or 51 mm) conduit, 63-3/4" (1619 mm) AFF.
E2	Internal electric booster (in lieu of external steam booster) 1-1/4" or 2" (32 or 51 mm) conduit, 63-3/4" (1619) AFF.
NOTE: Common electrical connection (single point) available, see page 4 for details. Booster information, see page 4.	
Plumbing Connections	
P1	Drain. May be drained to either side of valve, plug opposite side 2" (51 mm) FPT. Recommend a floor drain minimum of 12" (305 mm) from machine for access and maintenance. 7-3/8" (187 mm) AFF.
P2	Hot water. 1/2" (13 mm) FPT connection, 11-3/16" (284 mm) AFF. See plumbing notes for required temperatures.
P3	Cold water connection 1/2" (13 mm) FPT, cold water temperature 80°F (27°C), max., 7-3/8" (187 mm) AFF.
Steam Connections (P4 or P5)	
P4	Steam coils: 10 to 50 PSI (69 to 345 kPa) flowing, 3/4" (19 mm) FPT, 11-1/8" (283 mm) AFF.
P5	Condensate return: A 10 PSI (69 kPa) minimum differential pressure across the steam trap must be maintained. 3/4" (19 mm) FPT, 11-1/8" (283 mm) AFF one connection. (One bucket type trap furnished).
Vent Connections	
V1	Optional vent hoods, 4" x 16" (102 x 406 mm) vent stack with damper.

E1	Electrical Connection (3 PH only) Motors and Controls		
Voltage	Rated Amps	Minimum Supply Circuit Ampacity	Maximum Protective Device
208/60/3	16.6	20	20
240/60/3	16.6	20	20
480/60/3	9.4	15	15

Dish machine not provided with internal GFCI protection.

NOTE: Additional CLeN Voltages and Amperages are available, see document F40972.

CLCS66eN-EGR Steam Heat Dissipation	
BTU/HR.	
Latent	Sensible
46,200	19,800

SPECIFICATIONS

Capacities

Racks per Hour (NSF rated)	202
Wash Tank (U.S. gallons/Liters)	23 (87)
Power Scrapper (U.S. gallons/Liters).	23 (87)
Conveyor Speed (feet/Meters per minute)	5.6 (1.7)

Motor Horsepower (kW)

Drive	1/6 (0.12)
Wash	2 (1.5)
Power Scrapper	2 (1.5)

Water Consumption

U.S. Gallons/Liters per Hour (maximum use at 20 PSI/138 kPa).	126 (477)
U.S. Gallons/Liters per Rack.	0.62 (2.35)
Peak Drain Flow (U.S. gallons/Liters per minute)	38 (144)

Heating

Tank Heat, steam coils (pounds/kg per hour)	65 (29)
Electric Booster (built-in) (kW for 70°F/39°C rise)	30
Steam Booster (external) (pounds/kg per hour)	60 (27)
(If used on 20 PSI/138 kPa steam, 20 PSI/138 kPa water flowing, 130°F/54°C entering water raised to 180°F/82°C minimum)	

Venting

Load End (minimum CFM/M³)	200 (5.67)
Unload End (minimum CFM/M³)	400 (11.3)

Shipping Weight (approximate) 895 lbs. (388 kg)

Crated Dimensions. 76"L x 38"W x 78"H (1930 x 965 x 1981 mm)

E2	Booster Heat 30 kW Minimum 110°F (43°C) Incoming Water		
Voltage	Rated Amps	Minimum Supply Circuit Ampacity	Maximum Protective Device
208/60/3	83.9	90	90
240/60/3	80.2	90	90
480/60/3	40.1	50	50

WARNING: Plumbing and electrical connections should be made by qualified personnel who will observe all the applicable plumbing, sanitary, safety codes and National Electrical Code.

Plumbing Notes: Minimum incoming water temperatures: 110°F (43°) for 30kW internal booster. Building flowing water pressure to dish machine is 20 PSI/138 kPa (+/- 5 PSI/34 kPa). Single cold water connection supplies both drain water energy recovery and drain water tempering.

Recommended water hardness to be 3 grains (51 ppm) or less for best results.

Steam Heat Only: Flowing steam pressures above 50 PSI (345 kPa) must have a pressure regulator (by others) installed in the steam line.

Shut off valve must be supplied (by others) in the steam line to the dish machine.

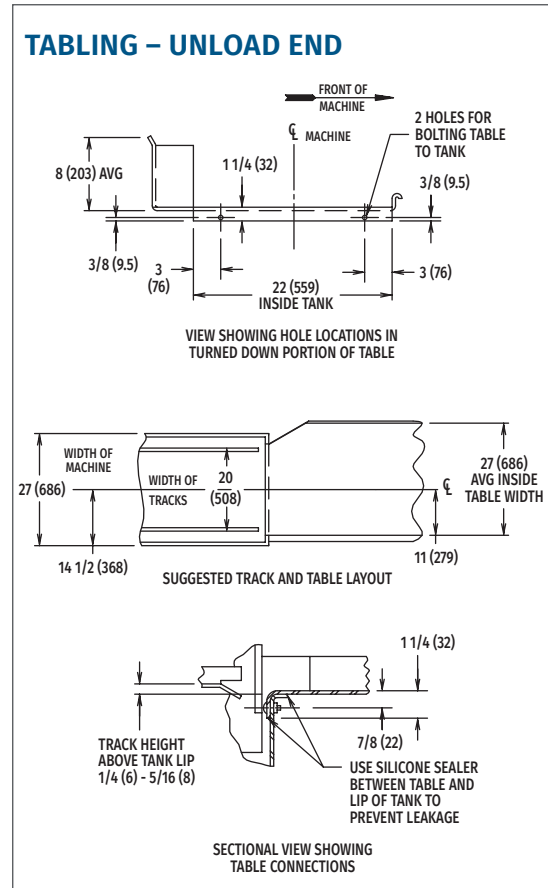
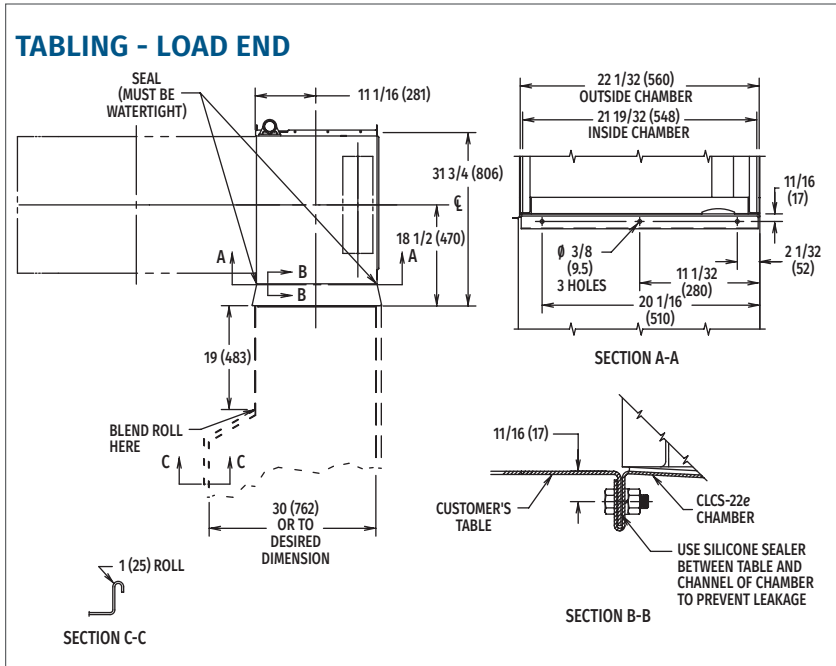


CLCS66eN-EGR STEAM High Temperature Corner Scrapper Rack Conveyor Dishwashing Machine

COMMON ELECTRICAL CONNECTION (SINGLE POINT) – CONTACT FACTORY FOR ADDITIONAL INFORMATION

Common Electrical Connection (Includes Motors & Controls and Electric Booster Heater)			
Voltage	MACHINE AND 30KW BOOSTER		
	Rated Amps	Minimum Supply Circuit Ampacity	Maximum Protective Device
208/60/3	100.2	110	110
240/60/3	100.2	110	110
480/60/3	49.5	70	70

NOTE: Additional CLeN Voltages and Amperages are available, see document F40972.



As continued product improvement is a policy of Hobart, specifications are subject to change without notice.